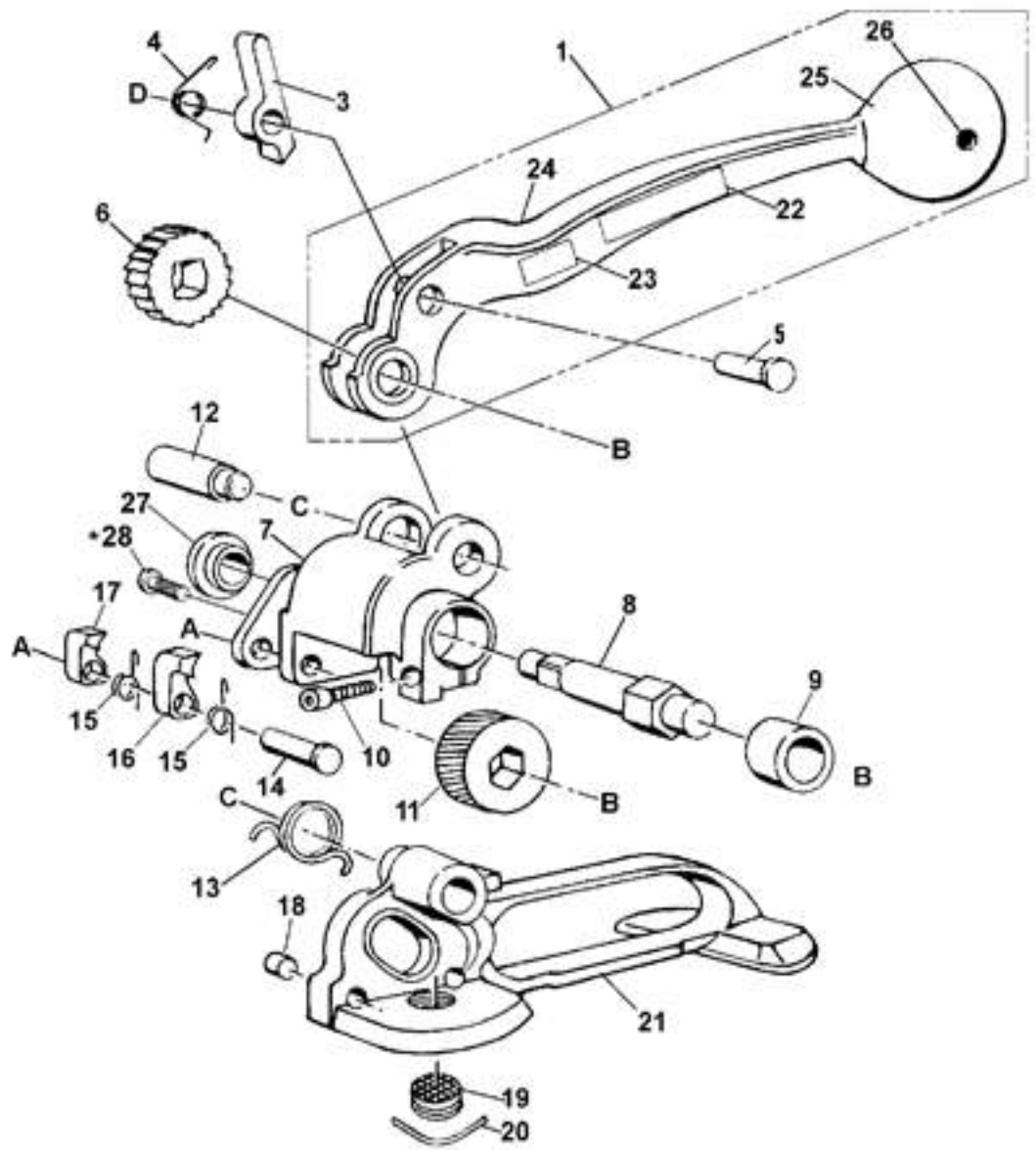


Signode ST Feedwheel Tensioner

ST TENSIONER PARTS LIST

KEY	QTY.	PART #	DESCRIPTION
1	1	273894	Handle assembly
3	1	003492	Handle pawl
4	1	003489	Handle pawl spring
5	1	003494	Handle pawl pin
6	1	003488	Ratchet gear
7	1	003490	Feedwheel support
8	1	003487	Feedwheel shaft
9	1	003478	Bearing
10	1	004502	SHCS, 10-32 x 5/8
11	1	003482	Feedwheel
12	1	003491	Support pin
13	1	003479	Support spring
14	1	003486	Retaining pawl pin
15	2	003483	Retaining pawl spring
16	1	003484	Long retaining pawl
17	1	003485	Short retaining pawl
18	2	001656	Strap guide pin
19	1	273748	Clutch plug assembly
20	1	001644	Lock wire
21	1	003497	Base
22	1	002471	Nameplate
23	1	003133	Caution plate
24	1	003493	Handle
25	1	306927	Knob
26	1	010057	Roll pin, 1/4D x 1-3/4LG
27	1	424250	Bushing
28	1	424251	BHCS, 1/4-28 x 1/4



When ordering parts, please show tool model, part number, and description. All recommended spare parts are underlined and should be stocked.

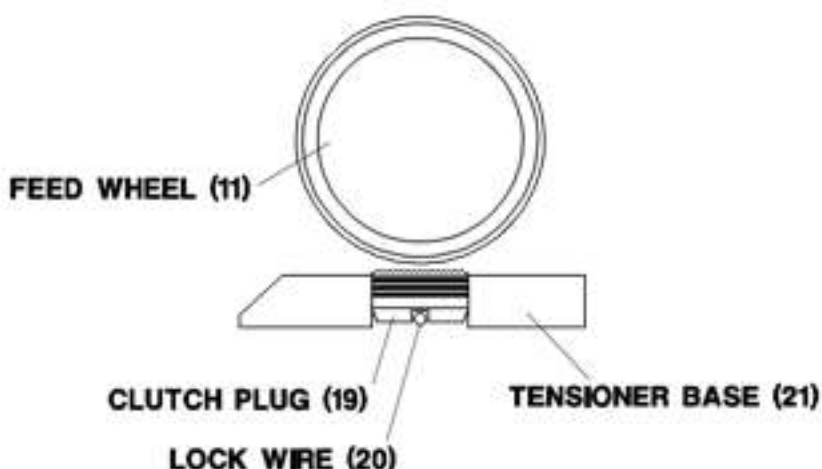
* Apply one drop of Loctite #271 (Red) or equivalent, available as Signode Part No. 422796.

NOTE: Keys numbers 8, 27 and 28 can be ordered together as Gear Housing Kit, Signode part No. 424436

WARNING All parts must be periodically inspected and replaced if worn or broken. Failure to do this can affect a product's operation and can result in personal injury.

CLUTCH PLUG ADJUSTMENT

1. Remove the lock wire (Key 20) with needle nose pliers.
2. Using a flat head screwdriver, tighten the clutch plug (19) so that it touches the feedwheel. Then back it off one groove to align it with the lock wire holes in the tool base. Be sure the clutch plug and the feedwheel do not touch.
3. Replace the lock wire over the grooves in the clutch plug and hammer flat. To be sure the lock wire is secure, place a screwdriver across the center of the lock wire and tap once more.



www.completepackagingproducts.com
TollFree: 866-787-2790

