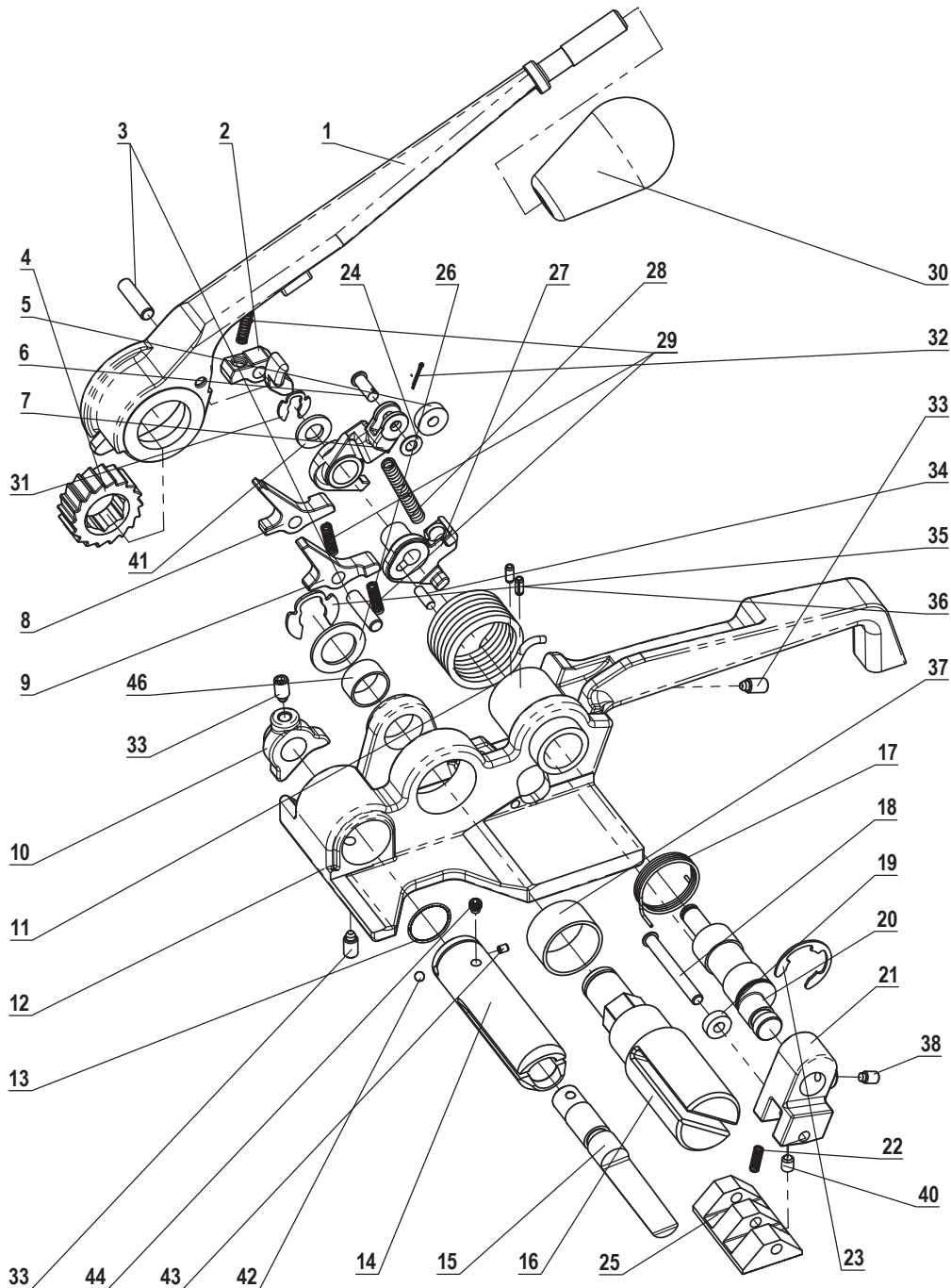


MUL-375

Heavy Duty Tensioner or Wide Cord



KEY No	PART DESCRIPTION	QTY.
375-01	HANDLE	1
375-02	TENSION PAWL	1
375-03	PIN	2
375-04	RATCHET WHEEL	1
375-05	ROLLER	1
375-06	ROLLER PIN	1
375-07	LEVER	1
375-08	PAWL LONG	1
375-09	PAWL SHORT	1
375-10	CUTTER LEVER	1
375-11	LEVER SPRING	1
375-12	FRAME	1
375-13*	CUTTER SPRING	1
375-14*	CUTTER HOUSING	1
375-15*	CUTTER	1
375-16	WINDLASS	1
375-17	SPRING	1
375-18	GRIPPER FOOT SHAFT	1
375-19	GRIPPER FOOT ROLLER	1
375-20	ECCENTRIC SHAFT	1
375-21	GRIPPER HOLDER	1
375-22	GRIPPER FOOT SPRING	1
375-23	E RETAINING RING (3/4")	1
375-24	WASHER 5x11x0.7	1
375-25	GRIPPER FOOT	1
375-26	WASHER	1
375-27	AUXILIARY LEVER	1
375-28	AUXILIARY SPRING	1
375-29	PAWL SPRING	3
375-30	KNOB	1
375-31	KLIPIRING 5/16"	1
375-32	COTTER PIN 1,2x8	1
375-33	SET SCREW M6x12 DOG POINT	3
375-34	NEEDLE ROLLER 4x11,8	1
375-35	KLIPIRING 5/8"	1
375-36	SPRING PIN 1/8"x5/16"	2
375-37	PLANE BEARING	1
375-38	SET SCREW M5x8 HALF DOG POINT	1
375-40	SET SCREW M5x6	1
375-41	WASHER 8	1
375-42*	BALL 5/32"	1
375-43*	SPRING PIN 3x4	1
375-44*	HEXAGON SOCKET SET SCREW M5x5	1
375-46	PLANE BEARING SMALL	1

*Part of the Cutter Assembly, order Part № 375-50