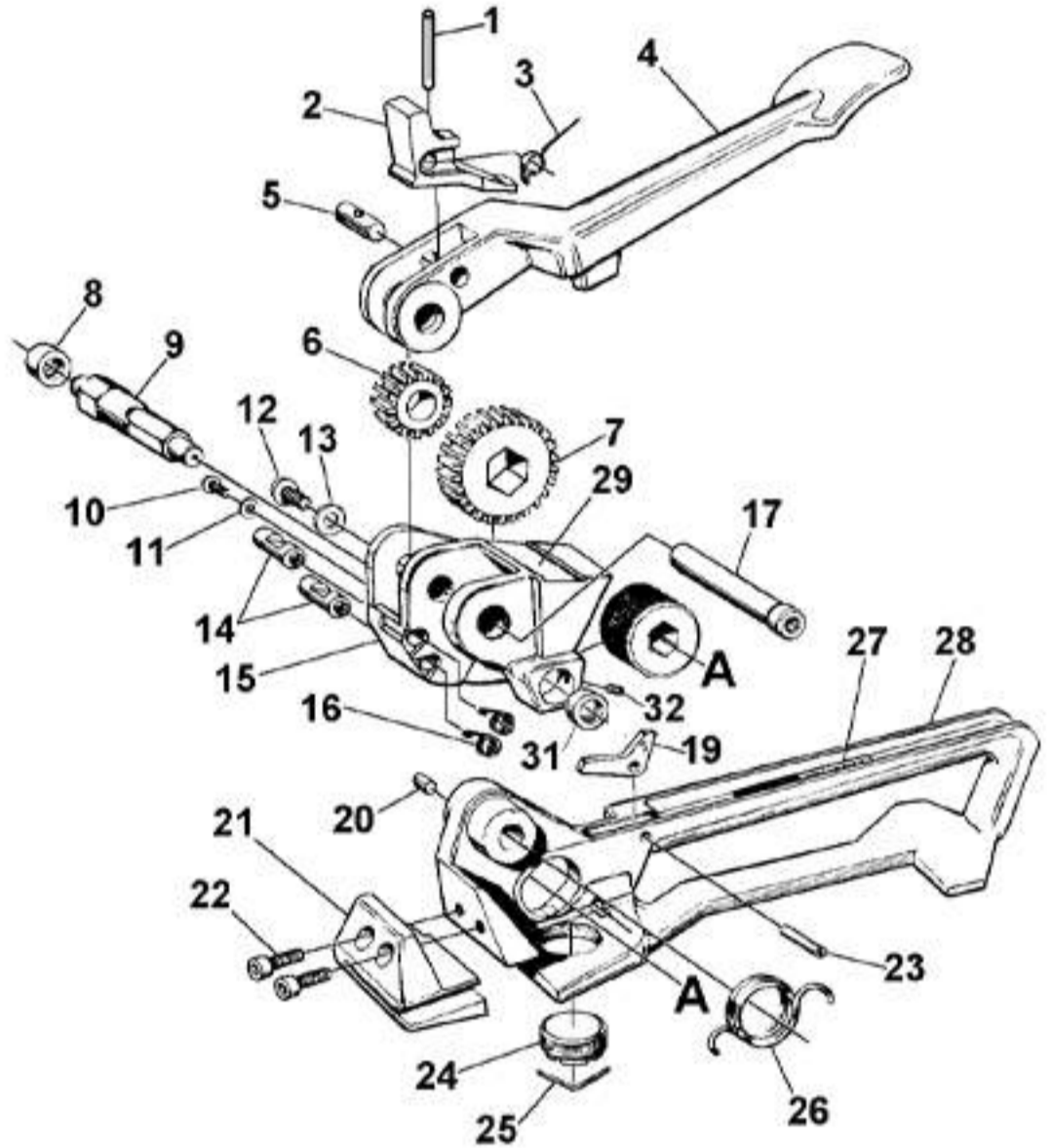


# Signode PFH Feed Wheel Tensioner

## PARTS LIST, PFH (017930)

KEY	QTY.	PART#	DESCRIPTION
1	1	014809	Roll pin, .093 x 1.000
2	1	017959	Drive pawl
3	1	017946	Drive pawl spring
4	1	017932	Tension handle
5	1	017945	Pawl pin
6	1	017925	Pinion gear
7	1	017926	Tension gear
8	1	017929	Bushing
9	1	017947	Feedwheel shaft
10	1	041912	BHCS, #10-24 x 3/8
11	1	184501	Washer, 3/16 SAE
12	1	043982	BHSCS, 5/16-24 x 1/2
13	1	004959	Washer, 5/16 SAE
14	2	017943	Hold pawl
15	1	017928	Gear housing
16	2	017944	Hold pawl spring
17	1	017937	Pivot pin
18	1	020517	Feedwheel
19	1	017941	Lift arm
20	1	001656	Strap guide pin
21	1	017935	Breaker nose
22	2	007878	SHCS, 1/4-28 x 3/4
23	1	097526	Roll pin, 1/4 x 7/8
24	1	017939	Wear plug
25	1	017952	Lock wire
26	1	017942	Base spring
27	1	003133	Warning sign
28	1	017934	Base
29	1	017955	Nameplate
31	1	424035	Bushing
32	1	020694	Set screw



## **⚠ WARNING**

Inspect all parts daily and replace them if they are worn or broken. Failure to do this can affect a product's operation and could result in serious personal injury.

### NOTES:

1. When ordering parts, please show tool model, part number and name. All recommended spare parts are underlined and should be stocked. Standard hardware parts may be obtained from local hardware suppliers.
2. Slot in roll pin (23) must face down.
3. Assemble lift arm (19) with leg marked "S" as shown.

### MAINTENANCE

Clean and apply a light weight machine oil to all moving parts on a weekly basis. Clean the feedwheel daily with a wire brush. Debris accumulated in the teeth of either the feedwheel or the clutch plug must be removed with a small wire brush. A need to clean the teeth will become apparent when either the feedwheel skids on the strap or the lower straps slips on the clutch plug during tensioning.

[www.completepackagingproducts.com](http://www.completepackagingproducts.com)

TollFree: 866-787-2790

